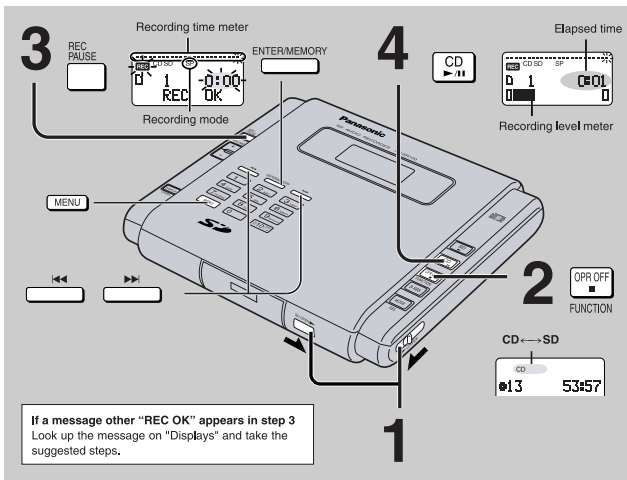


Recording from a CD to an SD card (Main unit only)



If a message other "REC OK" appears in step 3
Look up the message on "Displays" and take the suggested steps.

Preparation:

- Release HOLD mode.
- Release the card's write-protect switch.

- 1 Insert the SD card and CD.
- 2 Press [■, OPR OFF, FUNCTION] to switch to "CD".

Each time you press the button: CD ↔ SD

- 3 Press [REC PAUSE] to enter the recording standby mode.

Recording time meter

This gives you a rough guide to how much memory is left on the card.

Recording mode

See "Recording modes".

- 4 Confirm that "REC OK" appears, then press [▶/II, CD].

Recording and CD play start.

Recording starts from the first available space.

Play and recording stop when the CD ends.

To stop

Press [■, OPR OFF, FUNCTION].

"CARD Writing" appears on the display while the unit writes to the card.

The unit turns off about 5 minutes later.

To turn the unit off

Press and hold [■, OPR OFF, FUNCTION] while stopped until the display goes out.

Note:

Your attention is drawn to the fact that recording pre-recorded tapes or discs or other published or broadcast material may infringe copyright laws.

Recording modes

Total recording time and sound quality depend on the recording mode you choose for recording.

Approximate recording times (using a 64-MB card)

Recording mode	Total time (minutes)
HQ (high quality): 128 kbps	64
SP (standard play, default setting): 96 kbps	86
LP (long play): 64 kbps	129

For other cards, see "Recording and Playing on this unit".

Changing the recording mode

- 1 While in the recording standby mode, press [MENU].

You can also change the recording mode while stopped.

- 2 Press [◀◀] or [▶▶] to select "REC MODE?".

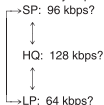
- 3 Press [ENTER/MEMORY].

"BITRATE?" appears on the display.

- 4 Press [ENTER/MEMORY].

- 5 Press [◀◀] or [▶▶] to select the recording mode.

Each time you press the button:



- 6 Press [ENTER/MEMORY].

To stop partway

Press [MENU] before step 6.

Track marks

These marks are added between tracks when recording. The area between two track marks is counted as one track.

Track marks are added automatically:

When recording CDs

Track marks correspond to those on the CD.

When recording from other equipment

If there is 2-second silence.

When recording through a microphone

Every 5 minutes.

Note:

- You can change the way track marks are added when recording from other equipment or through a microphone.
- Track marks may not be added correctly in some cases.

Recording a track that is playing

Recording starts from the beginning of the track.

- 1 Press [REC PAUSE] while playing the track.

Play stops and the unit enters the recording standby mode.

- 2 Confirm that "1-REC OK" appears, then press [▶/II, CD].

Play and recording stop at the end of the track.

Recording selected tracks

- 1 Program the tracks you want to record.

- 2 Press [REC PAUSE] to enter the recording standby mode.

- 3 Press [▶/II, CD].

Recording and program play start.

Note:

- This unit uses the AAC format to compress digital signals recorded from a CD to an SD card.
- Tracks recorded on this unit can be played on an SD audio player.
- Recording time may shorten after repeatedly recording and erasing tracks. Reformat the card to correct this.
- Depending on the condition of the CD recording, track marks may be added unnecessarily. You can erase such tracks after recording.

To ensure recording is completed correctly

Use the AC adaptor to power the unit. Recording stops if the batteries are depleted.

During recording

- Do not connect or disconnect the AC adaptor.
- Do not shake the unit.
- Do not open the card and disc lids.

Doing any of these can cause recording and play to stop and the data to be corrupted. Be especially careful while "CARD Writing" is on the display as recording may not be completed correctly.

- The anti-skip system is off while recording.